

alphamesh
fabrics





7 vision

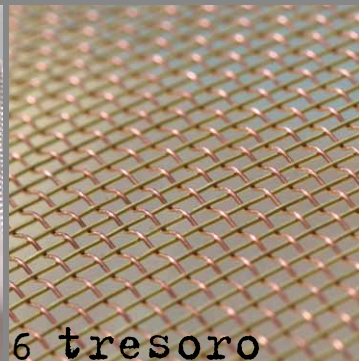
alphamesh fabrics

The range of alphamesh fabrics is a collection engineered for numerous architectural and interior design applications. The particularity of the fabrics lies in the weft yarns which are all 100% metal. alphamesh fabrics are produced on weaving looms using stainless steel, brass, copper and aluminium yarns, resulting in materials providing the haptic feedback and the appeal of fabrics, yet featuring the properties of metals. Which is one reason why the alphamesh fabrics can be safely deployed in either indoor or outdoor projects.

Metal fabrics provide so much more in terms of highly-performing capabilities. They can be moulded and shaped on a durably permanent basis. For the creation of glistening sculptures, large and small. Highlighted or nuanced with lighting and positioning effects. The common thread uniting all the alphamesh fabrics in spite of their different weaves and constructions is their precious, metallic surface-sheen. For making and shaping them to their true purpose.



3 seda



6 tesoro



5 cubo



4 iguana

Such fabrics,
as dreams
are made on.



seda

Masterstroke

seda bowls you over at first sight. With a silky appeal and a hot surface sheen. Expert weaving technology with finely spun stainless steel yarns lending the fabric a restrained elegance for unique moulding and shaping properties. Or for extravagant sculpturing.

Material

stainless steel
Open area: approx. 36 % / Weight: approx. 0.25 kg/m²
Standard width: 1500 mm

iguana

The exotic

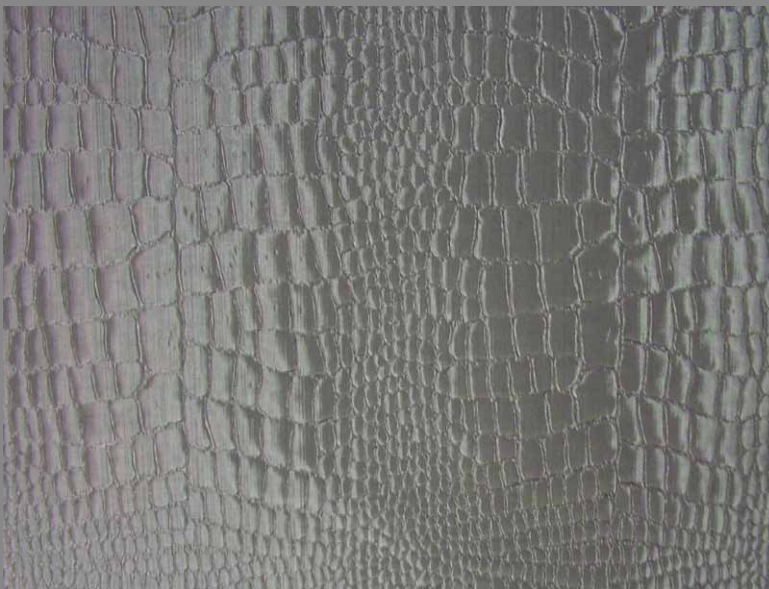
iguana stimulates just the right degree of adventurous curiosity for the exotic. The fine material is aptly enhanced by a finely-embossed reptile motif in a vibrantly structured texture. Highlighting the setting with a play of unobtrusive accents on a subtle colour palette.

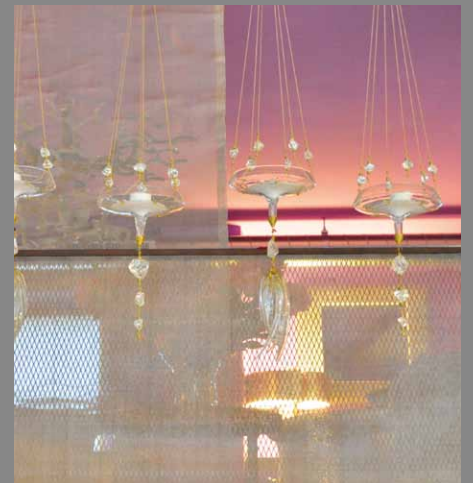
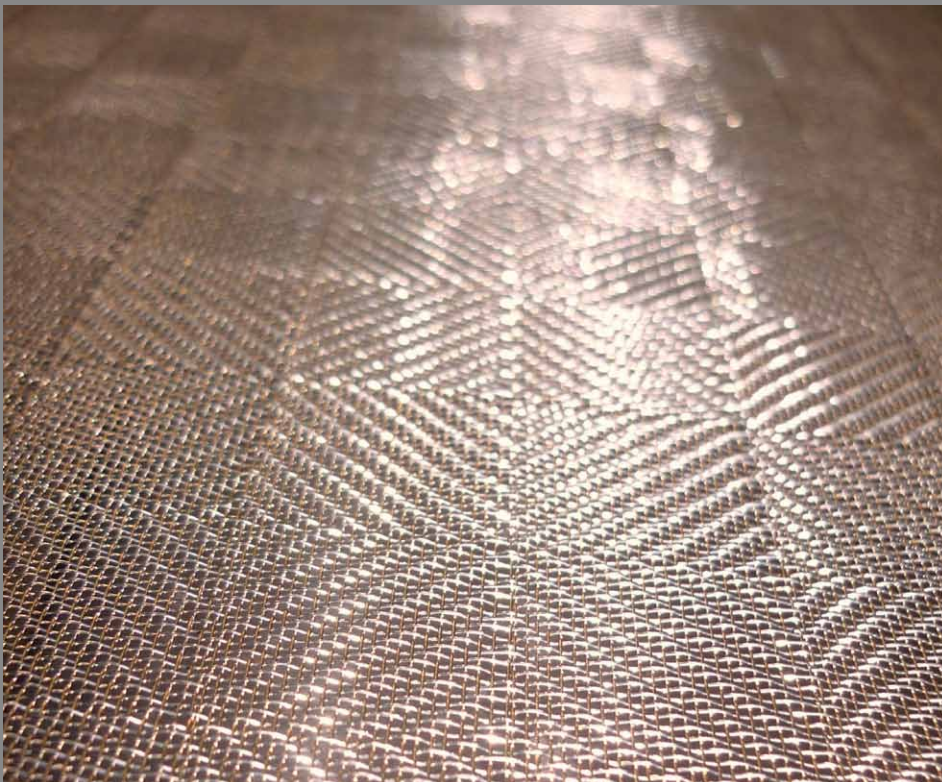
Material

stainless steel

Open area: approx. 36 % / Weight: approx. 0.25 kg/m²

Standard width: 1500 mm





cubo

Classicism

cubo for captivation: classic, vintage graphics with a punch. The cubic construction in fine aluminium yarns showcases a clearly-defined surface pattern for a rush of creative energy stirred by the nuanced light play on the single threads.

Material

aluminium

Open area: approx. 54 % / Weight: approx. 0.30 kg/m²

Standard width: 1500 mm / Max. width: 2500 mm on request

tesoro

Metal purity

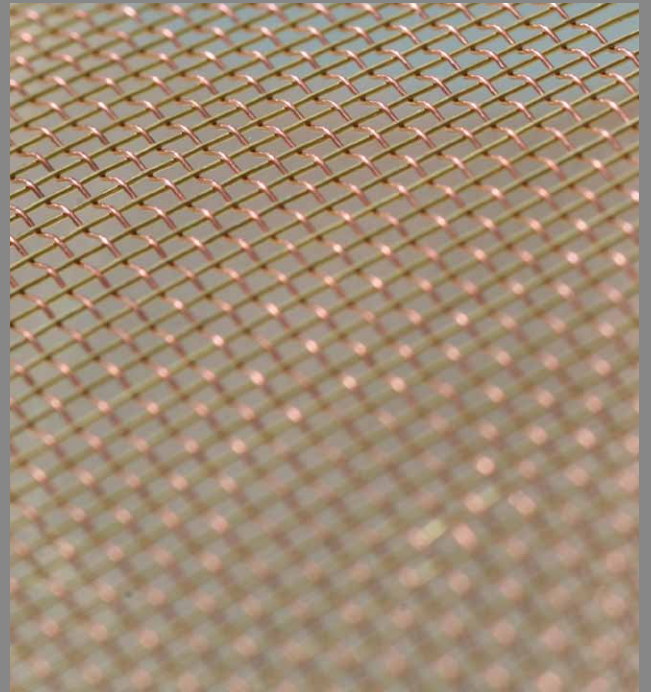
tesoro embodies pure elegance. Definitely noblesse at its finest with a timeless weave construction and an enticing sheen. For all ambient settings - whether classic or extravagant. Either two-dimensional, or as a three-dimensional membrane for volumetric moulding and shaping.

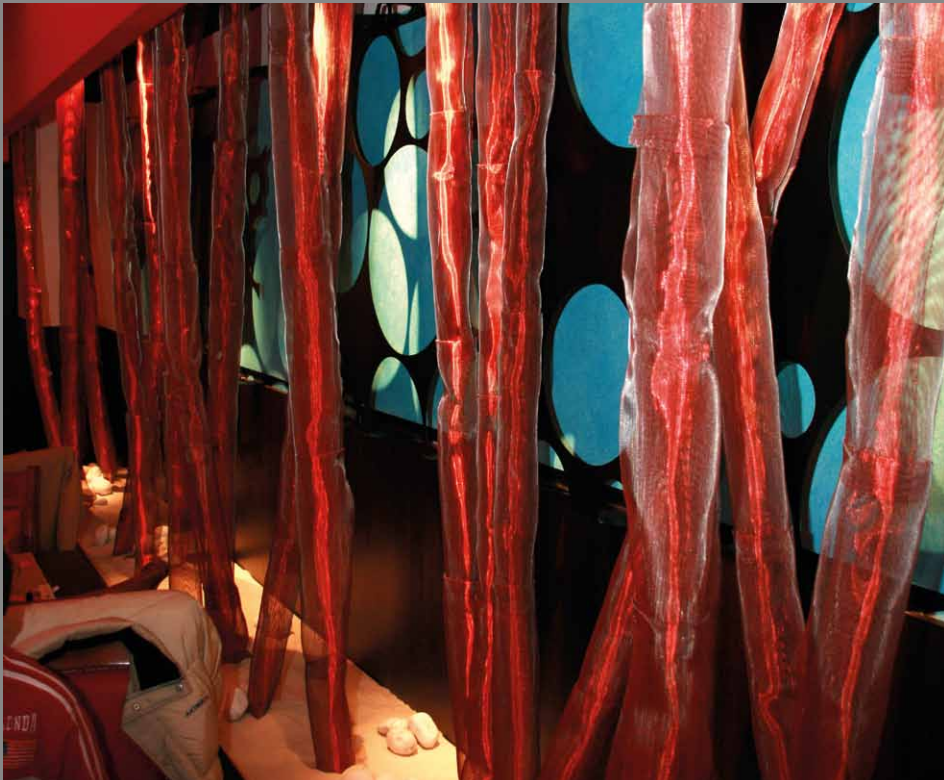
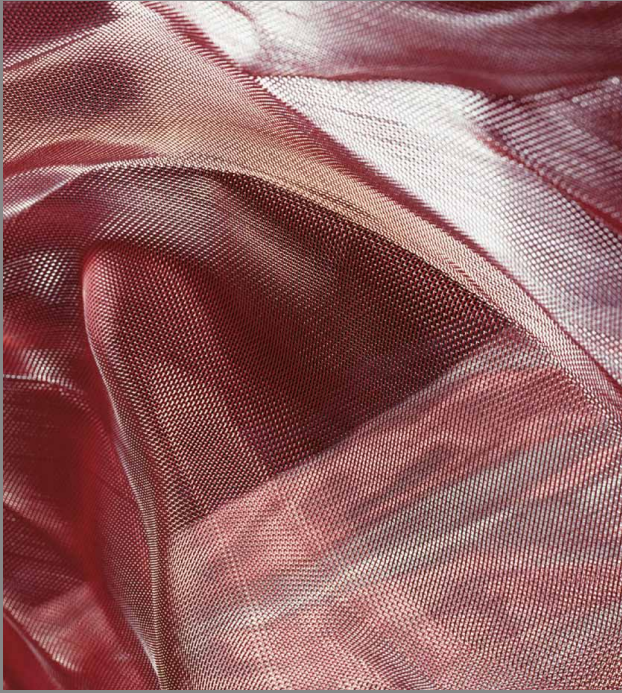
Material

brass + copper

Open area: approx. 63 % / Weight: approx. 0.70 kg/m²

Standard width: 1500 mm / Max. width: 2500 mm on request





vision

Phenomena


vision: for bewitching fairytale settings enhanced with brilliant colour plays, shading or moiré effects. The stainless steel and lacquered copper mesh literally conquers spatial dimensions, for a fusion of imaginative composition with harmonic stimulation.

Material

stainless steel + copper

Open area: approx. 53 % / Weight: approx. 1.00 kg/m²

Standard width: 1500 mm / Max. width: 2500 mm on request



proMesh GmbH
In den Waldäckern 10 · 75417 Mühlacker · Germany
Tel: +49 7041 9544-60 · Fax: +49 7041 9544-55
www.alphamesh.de · info@alphamesh.de